

National Theatre



Jellyfish

by Ben Weatherill

Visual Story

5 – 16 July 2019

Dorfman Theatre



Supported using public funding by
**ARTS COUNCIL
ENGLAND**

A Cartwright Productions Ltd.
production
In association with
the Bush Theatre

Visual Story Contents

1: Introduction

2: The Production

3: The Theatre

4: The Characters

**5: The Story and Scenes
in the Show**

Introduction

Every performance of **Jellyfish** at the National Theatre will be in a relaxed performance environment.

There will be a more relaxed approach to making noise during the show, and coming in and out of the auditorium if you need to. If you need a break, there will be a chill-out space available in the Dorfman foyer close to the auditorium.

This visual story contains information about the play and lots of images to help you prepare for your visit. It also has information to help you find your way to the Dorfman theatre at the National Theatre, where the show is being performed.

If you would like to see some videos with more information about the show, please click on the links below (if you are reading this on a computer). Or go to the National Theatre YouTube page.

[An interview with Sarah Gordy – Sarah discusses playing Kelly in Jellyfish and we see some video footage from the show](#)

[Trailer – video footage from the show and review quotes](#)

The Production

Show times

Evening performances of **Jellyfish** begin at 7.30pm and matinee performances begin at 2.30pm.

Length

This show is 2 hours and 15 minutes long and is shown in two parts with an interval in the middle (an interval is a short break in the show). You can leave the auditorium during the show, and when you're ready to go back in an usher will let you back in at a suitable moment.

If you do need to take a break during the show, you are welcome to go out into the foyer area. A chill-out space will be available.

Theatre guidelines

Using a camera or a mobile phone is not allowed during the performance. If you need to use a device, like a tablet, for your communication, please inform the ushers. You can use your phone or tablet in the chillout space or in the Dorfman foyer.

There will be a more relaxed approach to making noise during the show, and coming in and out of the auditorium (the space where the performance is taking place) if you need to. If you need a break, there will be a chill-out space available in the Dorfman foyer (the space outside of the auditorium) close to the auditorium.

Warnings

At points during the production, there will be:

- Music
- Beach and seagull sound effects
- Flashing lights
- Smoking on stage (briefly)

You can cover your ears, or you can use ear defenders if you have some with you.

The Theatre

The play is performed at the Dorfman theatre which is inside the National Theatre on the South Bank in London. The nearest train stations are Waterloo, Southwark and Embankment. There is also a car park at the National Theatre.

Here is a picture of the National Theatre



The Theatre

The entrance to the Dorfman Theatre is located down the side of the National Theatre building on Stage Door Avenue. If you do enter the National Theatre at the main Riverfront entrance the staff will direct you to the Dorfman.

You will need your ticket to get into the auditorium (the room where the show is performed). You might already have yours when you arrive but if not, you can pick them up from the Box Office in the Dorfman foyer (the place where tickets are sold.)

Here is a photo of the entrance to the Dorfman Theatre



Here is a picture of the Dorfman foyer



The Theatre

You may need to wait in the Dorfman theatre foyer before the show starts. Other audience members (people who watch the show) may be waiting there to watch the show so it might be busy.

If you would like to put a bag or a coat in the cloakroom (a room for storing bags and coats) then you need to go to the cloakroom located near the toilets. Any large bag will need to be left in the cloakroom. This includes rucksacks so if there are things you need to take into the auditorium please bring a small bag.

Doors to the auditorium will open about 20 minutes before the play begins. When you go to the auditorium an usher will look at your ticket and tell you where your seat is. An usher is someone who works at the theatre and is available to help.

When you enter the auditorium you will be able to see the stage (the area where the actors perform the show) and the seats where the audience sits.

At the end of the show the audience will clap to say thank you to the performers.



The Characters



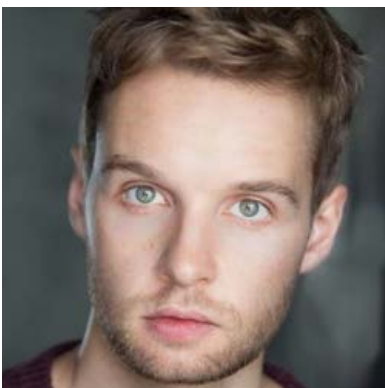
Sarah Gordy
Sarah plays Kelly



Nicky Priest
Nicky plays Dominic



Penny Layden
Penny plays Agnes, Kelly's mum



Sion Daniel Young
Sion plays Neil

The story and scenes in the show

Here is a breakdown of each scene in the performance. The performance is set in Skegness. Skegness is a town by the seaside in the UK.



Scene 1 – The Beach

The performance starts on the beach.

Kelly and Agnes walk along the beach every day. Agnes is Kelly's mum.

Warning: At some point Kelly will tie her shoe laces and Agnes will try and help her. Kelly will hit Agnes and Agnes will jump back and shout.

Scene 2 – The Beach

Kelly is sitting on a bench with Neil. They are eating chips.

Kelly and Neil fancy each other. Kelly wants to kiss Neil. Neil is nervous but in the end he kisses Kelly.



Scene 3 – The Beach

Kelly and Agnes are back at the beach. Kelly's phone keeps buzzing. It is Neil texting her.

Kelly tells Agnes about Neil. Agnes gets angry and worried.

The story and scenes in the show

Scene 4 – A Car Park

Agnes speaks to Neil in the car park outside the arcade.

Agnes is angry at Neil for kissing her daughter Kelly.

Agnes tells Neil he can not see Kelly anymore.

Scene 5 – Seal Sanctuary

Neil and Kelly are at the Seal Sanctuary.

Neil tells Kelly they should not see each other again.

Kelly tells Neil that if he likes her, he is not allowed to leave her.

Scene 6 – Kelly's House

Kelly and Neil are seeing each other secretly. Neil is worried what will happen when Agnes finds out.

Kelly and Neil decide to have sex for the first time.

The story and scenes in the show



Scene 7 – Kelly’s House

Agnes invites Dominic for dinner at Agnes and Kelly’s house.

Agnes wants Dominic to be Kelly’s boyfriend.

Kelly loves Neil, but becomes friends with Dominic.

Kelly tells Agnes that Neil is her boyfriend. Kelly tells Agnes that she is pregnant.

Kelly tells Agnes she is leaving home to live with Neil.

Warning: At some points Kelly will shout at Agnes loudly.

Interval

The interval is 15 minutes.

There is a bar in the Dorfman foyer, just outside the auditorium. Tea, coffee and soft drinks are available, as are jugs of tap water.

Toilets are on the ground floor in the Dorfman foyer.

The story and scenes in the show

Scene 8 – The Beach

Agnes, Kelly and Neil meet for the first time since Kelly moved out.

Agnes is angry at Neil. Kelly gets angry that Agnes and Neil are talking as though she is not there.

Warning: At some points Kelly will shout at Agnes loudly.



Scene 9 – Agnes's Garden

Agnes and Dominic sit on a bench.

Agnes is throwing a party for Kelly's birthday but Kelly has not arrived.

Dominic tells Agnes she should listen to what Kelly wants.

Neil comes into the garden and says Kelly is not coming.

Dominic tells Neil he will be filming an episode of Mastermind.

Agnes gives Neil a booklet about testing unborn babies for Down's Syndrome.

The story and scenes in the show

Scene 10 – A Hotel Room in Whitby

Kelly and Neil are on holiday in Whitby, another seaside town.

They are arguing because they have not been given a double bed.

Kelly is angry he has left his job.

Kelly tells Neil she found the booklet about testing.

Neil is worried that he can't talk to Kelly about problems.

Kelly and Neil break up.

Warning: At some points Kelly will shout at Neil loudly.

Scene 11 – Agnes's House

Agnes shaves Kelly's legs.

The story and scenes in the show



Scene 12 – The Beach

Kelly and Dominic are on the beach.

Dominic is quizzing Kelly about animals.

Kelly asks Dominic about Mastermind.

Kelly tells Dominic she has made a decision to have a hospital test.

Dominic tells Kelly she should talk to Neil.

Scene 13 – Agnes’s House

Kelly has just had a hospital test to see if her baby will have Down Syndrome.

Neil asks Agnes to be happier about the baby.

Agnes tells Neil that having a baby with Down Syndrome is hard.

Scene 14 – The Beach

Neil and Kelly are on the beach.

Kelly gives Neil a piece of amber, because amber is rare and precious.

Kelly asks Neil to marry her. Neil says ‘yes’.

The story and scenes in the show



Scene 15 – The Beach

Agnes and Kelly are on the beach.

Kelly has just given birth to her baby.

They are going to visit Kelly's baby in hospital.

Agnes tells Kelly about when Kelly was born.

Agnes and Kelly find a dead jellyfish.

Agnes tells Kelly she is proud of her.

Kelly says she will take good care of her daughter – just you watch!

If you have any questions about access for this production, or if you need any help, please contact the Box Office on: **020 7452 3000**

Or you can email **boxoffice@nationaltheatre.org.uk**

If you would like to make an advance visit ahead of the performance, please email **access@nationaltheatre.org.uk**

Our next Relaxed Performances will be **Mr Gum and the Dancing Bear - the Musical!** on Saturday 17 August at 2pm, and **The Ocean at the End of the Lane** on Saturday 18 January at 2pm.